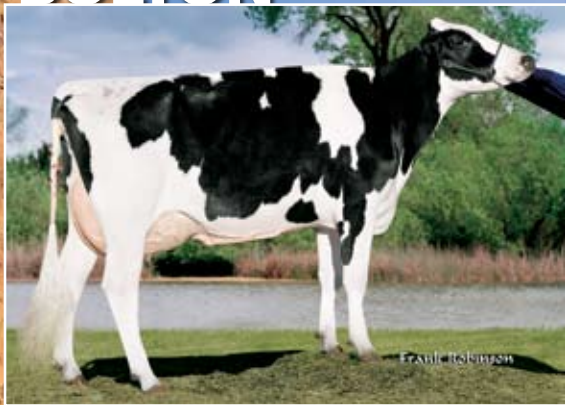


ABS CORNERSTONE[®]

THE FOUNDATION OF DAIRY GENETICS[®]

29HO11111
BOLTON



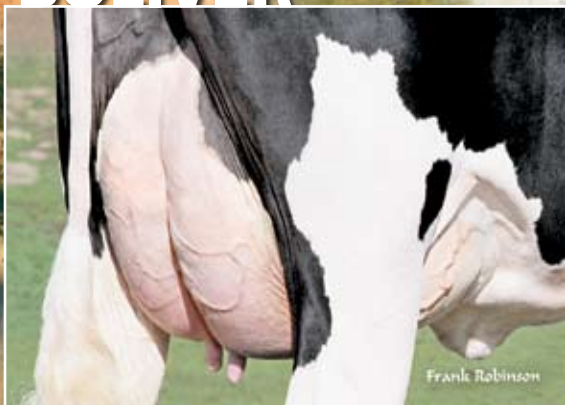
dtr: Gropetti Bolton 296-Grade GP-84, 2nd lactation
Gropetti & Sons, San Joaquin, CA

29HO10644
GARRISON



dtr: Ebert Garrison 2050 VG-88, 2nd lactation
Randy Ebert, Algoma, WI

29HO10124
BOLIVER



udder of: Koetsier Boliver 430-Grade GP-81
Jake & Jay Koetsier, Tulare, CA

THERE'S MORE WHERE THESE CAME FROM...

The ABS Cornerstone[®] Program delivered the bulls that sired these phenomenal daughters and has even more in store for you!

To incorporate ABS Cornerstone genetics into your herd, contact your ABS Representative.



©2008 ABS Global, Inc.
1525 River Road, DeForest, WI 53532
Ph: 800-227-7883
Fax: 608-846-6392
www.absglobal.com

